

# INSTALLATION & OPERATION MANUAL



## Atlas LR-06P 6,000 lb. Capacity Low Rise Scissor Lift



**Atlas Automotive Equipment**  
[www.atlasautoequipment.com](http://www.atlasautoequipment.com)  
(866) 898-2604

Revised: 4/30/2019

**Read this entire manual before operation begins.**

Record below the following information which is located on the serial number data plate.

Serial No. \_\_\_\_\_

Model No. \_\_\_\_\_

Date of Installation \_\_\_\_\_

# ———— Contents ————

Product Features . . . . .	4
Installation Requirement . . . . .	5
Steps Of Installation . . . . .	6
Exploded View . . . . .	10
Operation Instructions. . . . .	14
Maintenance Schedule. . . . .	16
Trouble Shooting . . . . .	17
Parts List . . . . .	18
Warranty . . . . .	24

---

# Product Features

---

- Automatic safety lock: 3 position safety lock
- Automatic safety lock release
- Portable unit is easy to move with the power unit stand
- High speed: From 0-600mm (23 5/8") in just 38 seconds
- Standard rubber pads included



Fig. 1

## Specifications

Model	Lifting Capacity	Lifting Time	Raised Height	Lowered Height	Overall Width	Overall Length	Runway Width	Gross Weight	Motor
LR06	2.8T 6,000 lbs	38S	600mm 23 5/8"	105mm 4 1/8"	1780mm 70"	1938mm 76 1/4"	456mm 18"	350Kg 800 lbs	1.5HP /110V

# Installation Requirement

---

## Tools Requirement

Screw Set



Socket Head Wrench (8")



Grease Gun



Pliers



Wrench sets (13#, 15#, 17#, 19#)



Fig. 2

## Power Requirement

The electrical source must be 2.2KW minimum. The source cable size must be 2.5mm<sup>2</sup> and in good condition of contacting with floor.

# Steps Of Installation

---

## A. Check The Parts Before Assembly

1. Packaged lift, Parts box, Power Unit and Power Unit Stand. Move aside the parts, Open the outer packing and check the parts according to the shipment parts list.

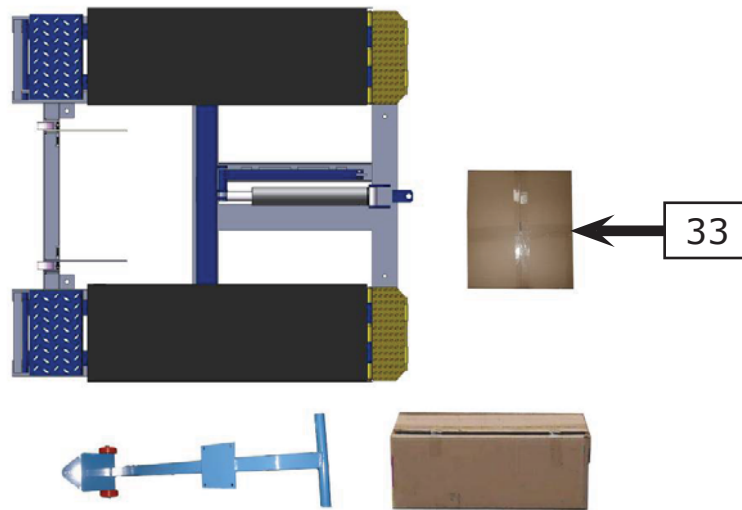


Fig. 3

2. Open the parts box, check the parts according to the part list.



Fig. 4

3. Check the parts of the parts bag according to the parts bag list.



Fig. 5

## B. Install Hydraulic Power Unit

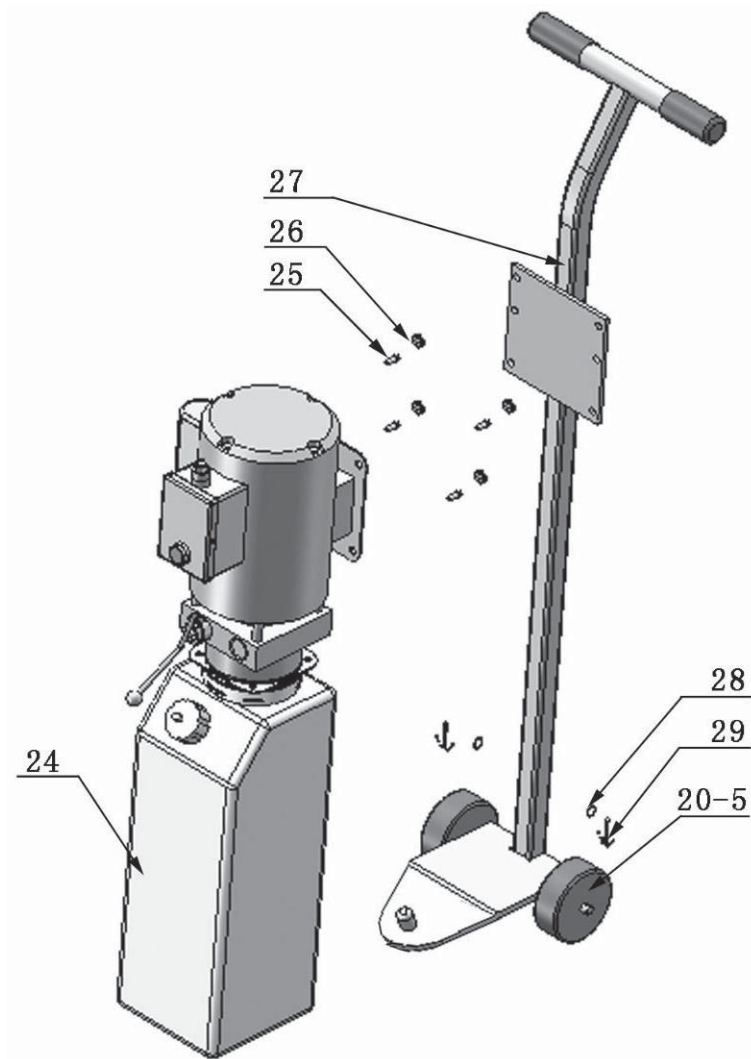


Fig. 6

## C. Install Fitting To Power Unit, And Then Connecting Oil Hose

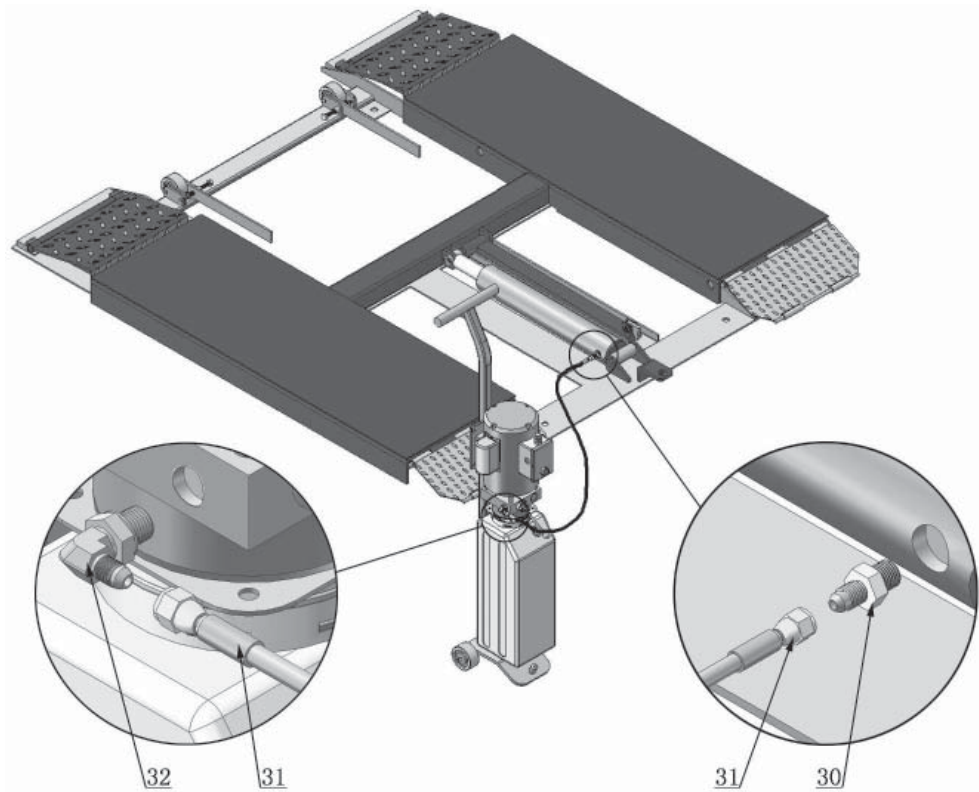


Fig. 7

## D. Install Electrical System

Connect the power source on the data plate of power unit.

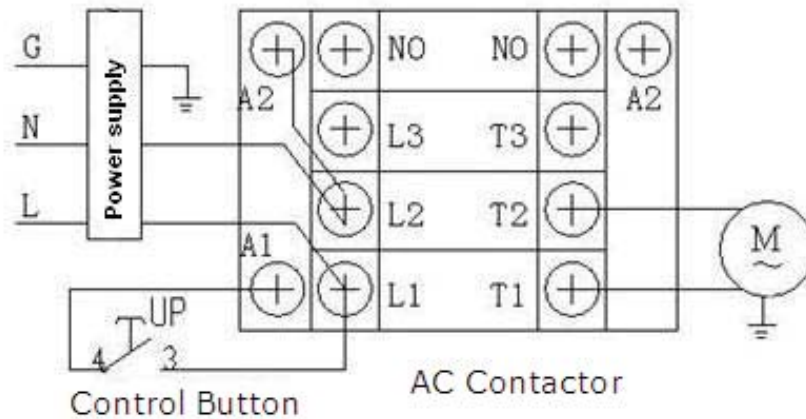
### Note:

1. For the safety of operators, the power wiring must contact the floor well.
2. Pay attention to the direction of rotations when using three phases motors.

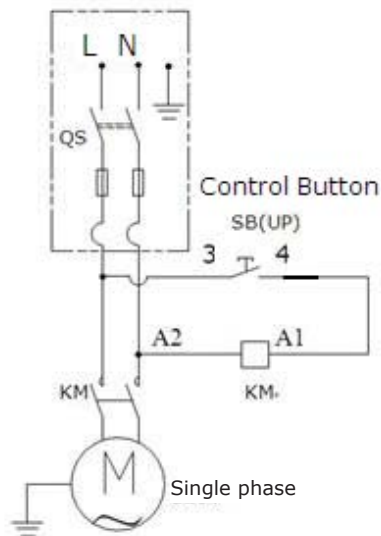


# Atlas Single Phase Motor

1. Connecting the two power supply lines (fire wire **L** and zero wire **N**) to terminals of AC contactor marked **L1, L2** respectively.
2. Connecting the two motor wires to terminals of AC contactor marked **T1, T2**.
3. Connecting **L2** to **A2** of AC contactor.
4. Connecting two wires of control button to A.C. contactor terminals marked **A1, L1**.



## Electric Diagram



**Fig. 8**

# Exploded View

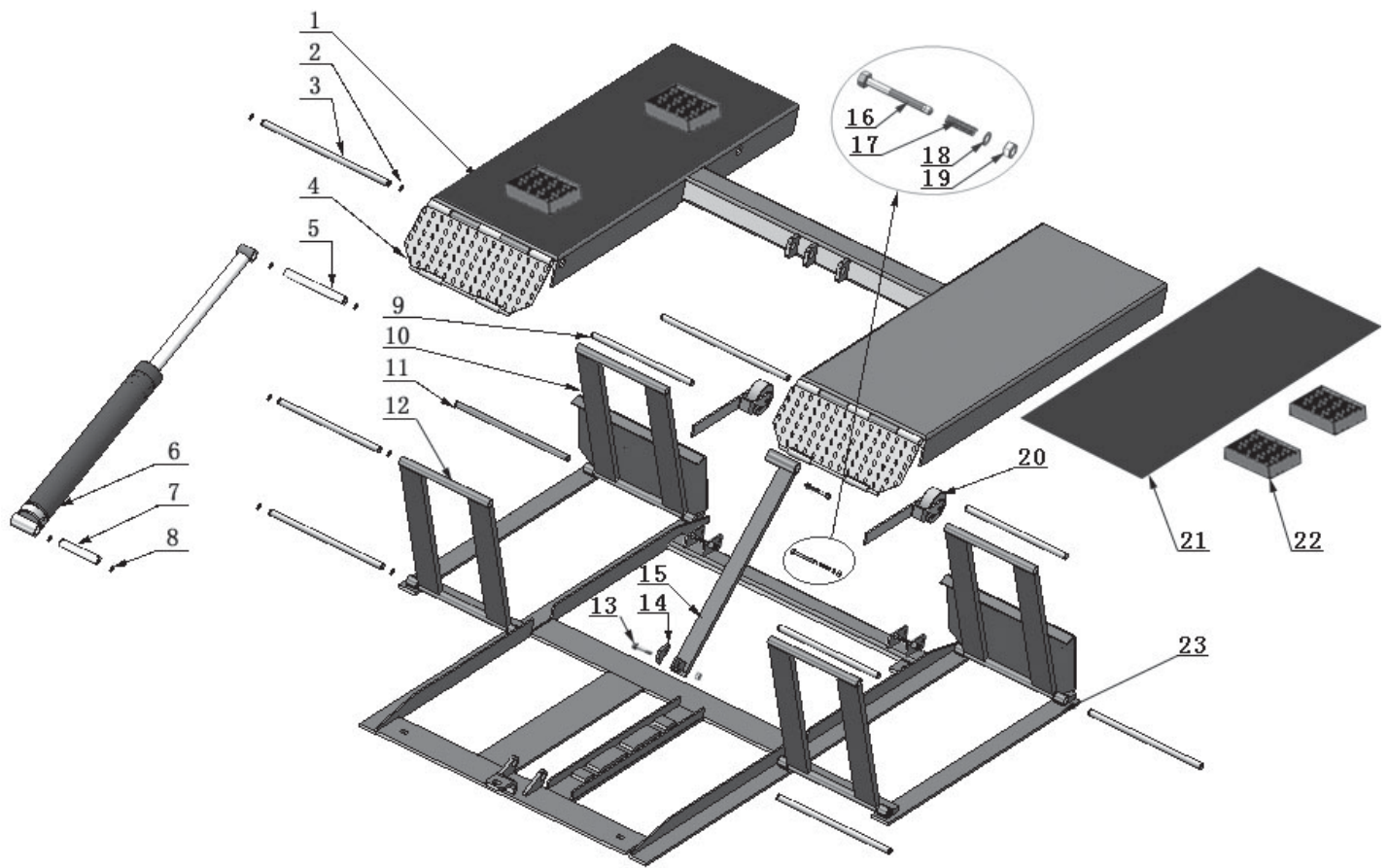


Fig. 9

# Cylinder

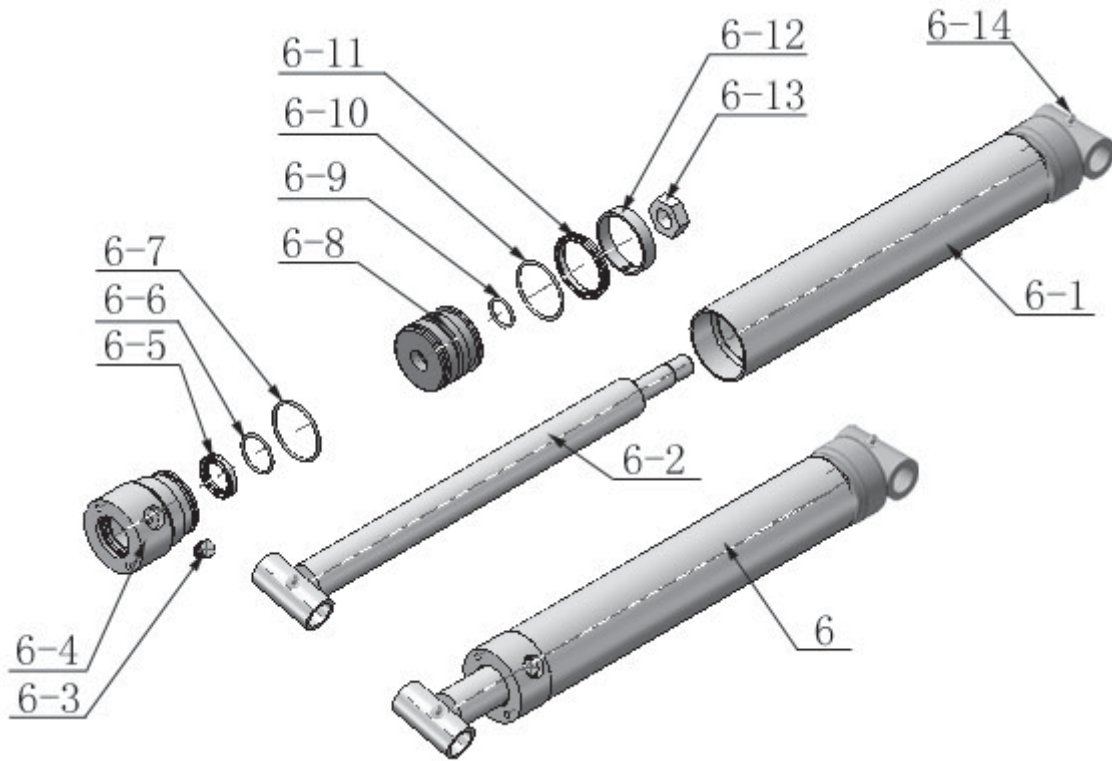


Fig. 10

# Roller Assembly

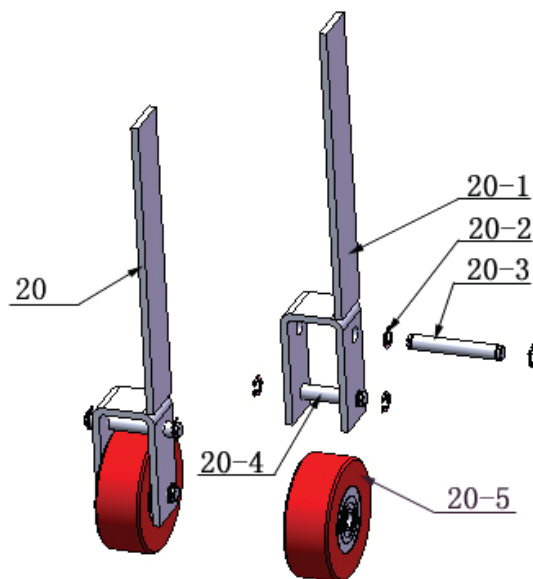


Fig. 11

# Atlas Manual Power Unit

110V/60HZ, Single Phase

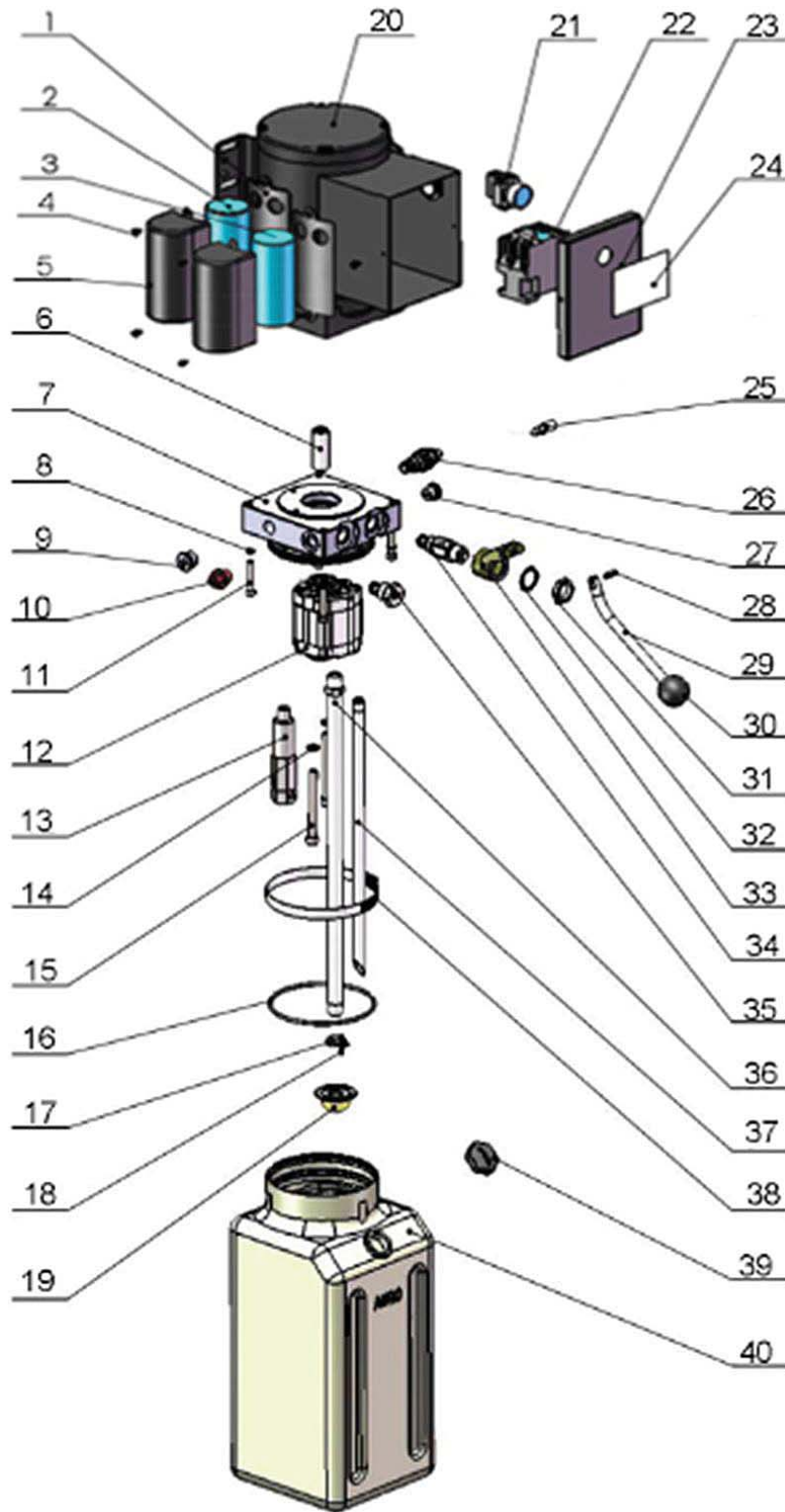


Fig. 12

# Illustration Of Hydraulic Valve For Atlas Power Unit

110V/60HZ/1 Phase

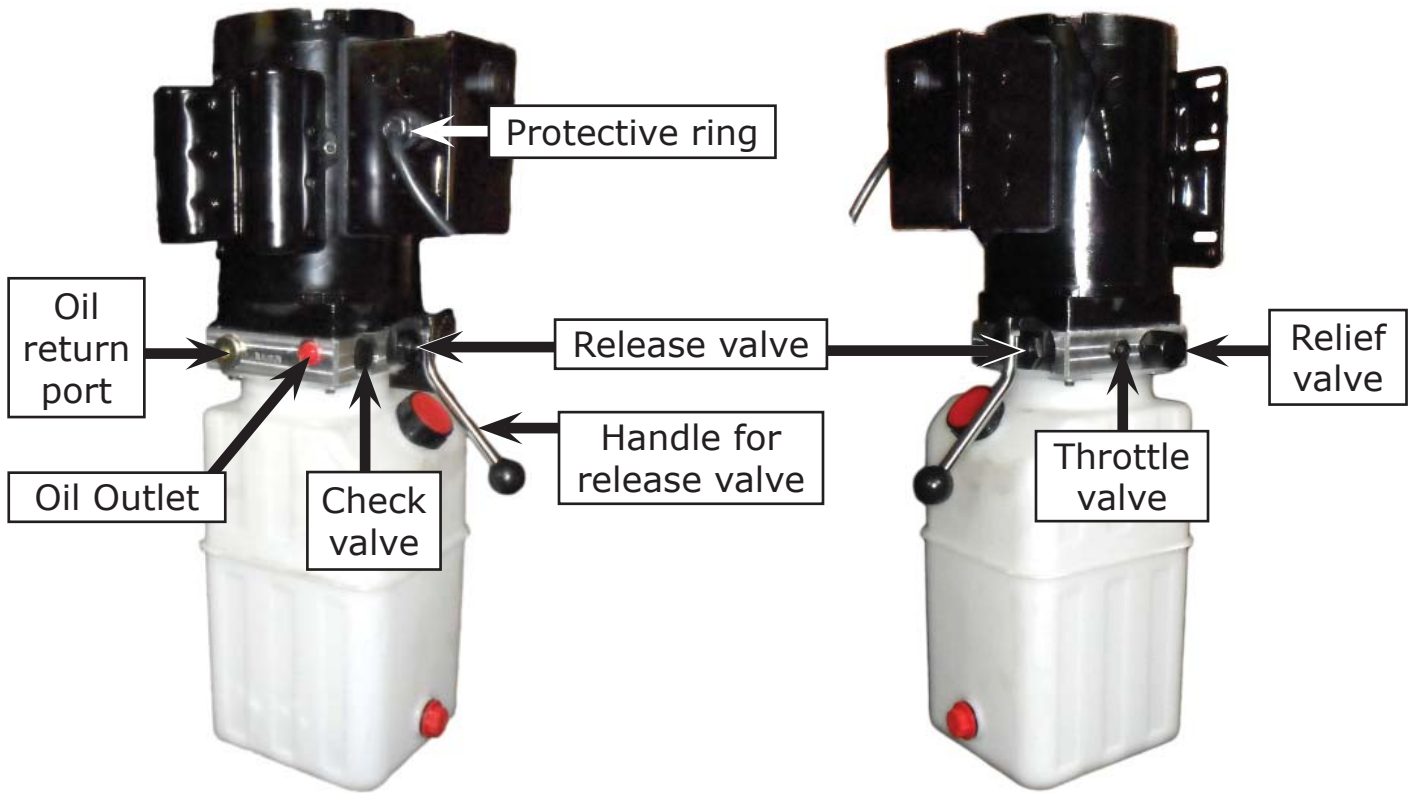


Fig. 13

# Operation Instructions

---

1. Install the oil hose between oil cylinder and power unit, connect well the power supply wire. The machine can be ready to use.
2. The roller assembly must be disengage when lifting vehicle (**See Fig. 16**).
3. To raise and lock the lift: Press the button up till the lift is raised to the required height and the locks are in engaged (**See Fig. 17**), then push release handle of the power unit, the lift would be locked.
4. To lower lift: Press the button UP, until the safety lock is in the released position (**See Fig. 15**), lower lift by pushing lowering handle.

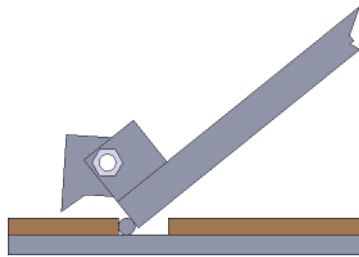


Fig. 14

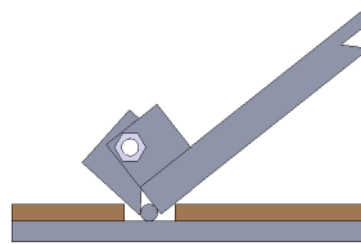


Fig. 15

5. Move lift: Pull up roller bracket, lock two roller assembly to the lift with roller shaft. (**See Fig. 19 & 20**). Moving the lift by the power unit stand.

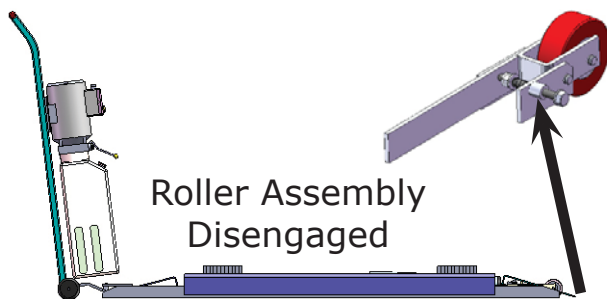


Fig. 16

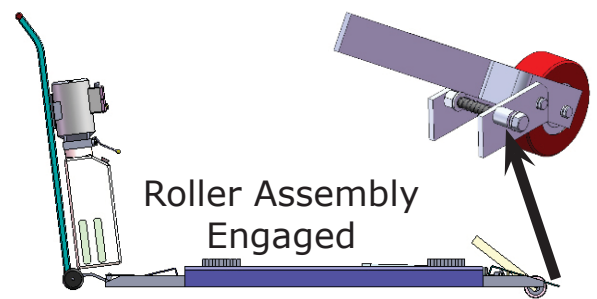


Fig. 17

6. There are four fixed holes in the machine, can fix the machine on ground by 3/4 X 4 3/4" anchor bolts.

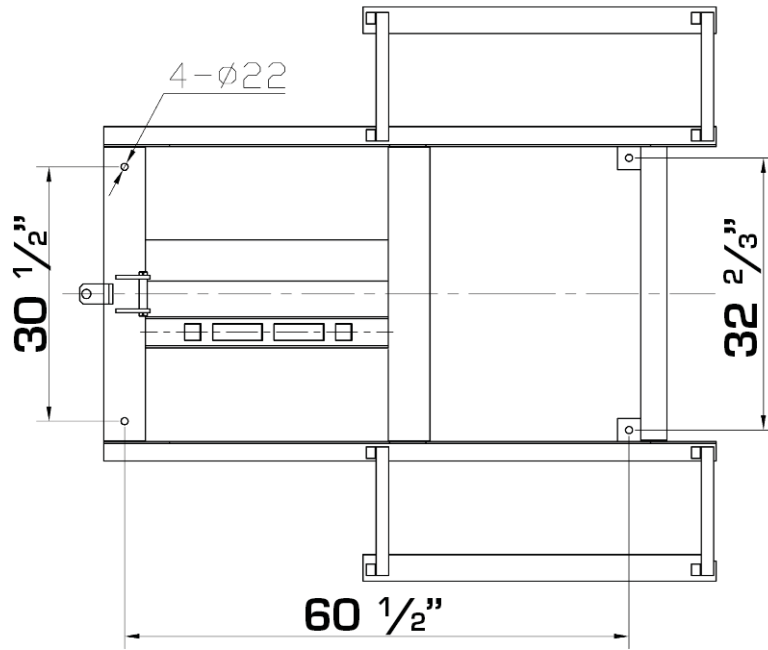


Fig. 18

# Maintenance Schedule

---

## Monthly:

1. Lubricate all moving parts with lubricant.
2. Check all connectors, bolts and pins to insure proper mounting.
3. Make a visual inspection of all hydraulic hoses/lines for possible wear or leakage.

## Every six months:

1. Make a visual inspection of all moving parts for possible wear, interference or damage.
2. Check all fastener and re-torque.



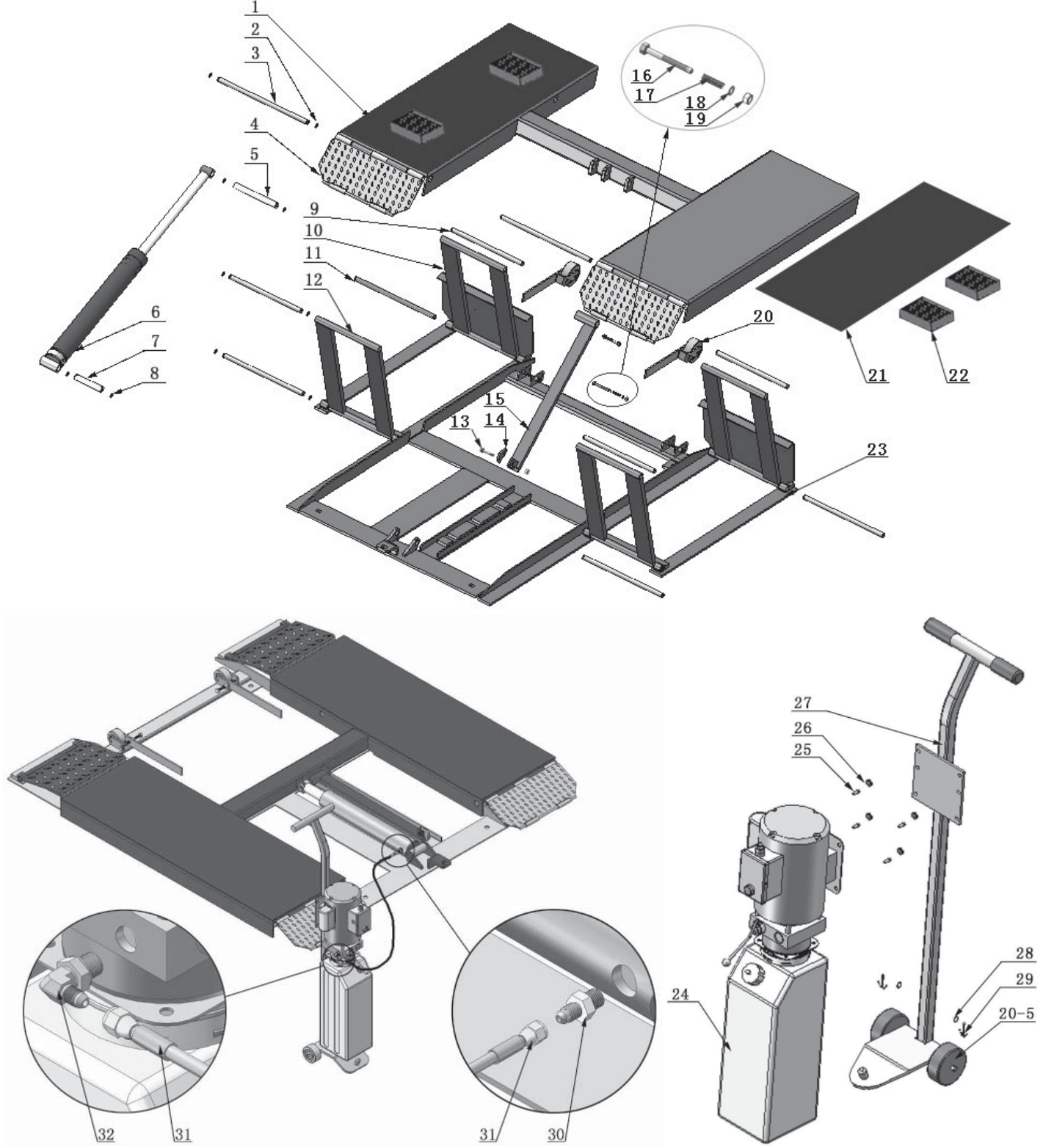
# Trouble Shooting

---

TROUBLE	CAUSE	REMEDY
Motor does not run	<ol style="list-style-type: none"> <li>1. Button does not work</li> <li>2. Wiring connections are not in good condition</li> <li>3. Motor burned out</li> <li>4. AC contactor burned out</li> </ol>	<ol style="list-style-type: none"> <li>1. Replace button</li> <li>2. Repair all wiring connections</li> <li>3. Repair or replace motor</li> <li>4. Replace AC Contactor</li> </ol>
Motor runs but the lift is not raised	<ol style="list-style-type: none"> <li>1. Motor runs in reverse rotation</li> <li>2. Gear Pump out of operation</li> <li>3. Release Valve in damage</li> <li>4. Relief Valve or Check Valve in damage</li> <li>5. Low oil level</li> <li>6. Overload or system low pressure</li> </ol>	<ol style="list-style-type: none"> <li>1. Reverse two power wire</li> <li>2. Repair or replace</li> <li>3. Repair or replace</li> <li>4. Repair or replace</li> <li>5. Fill tank</li> <li>6. Check load or adjusting the pressure of hydraulic system</li> </ol>
Lift does not stay up	<ol style="list-style-type: none"> <li>1. Release Valve out of work</li> <li>2. Relief Valve or Check Valve leakage</li> <li>3. Cylinder or Fittings leaks</li> </ol>	Repair or replace
Lift raises slowly	<ol style="list-style-type: none"> <li>1. Oil line is jammed</li> <li>2. Motor running on low voltage</li> <li>3. Oil mixed with air</li> <li>4. Gear Pump leaks</li> <li>5. Overload lifting</li> </ol>	<ol style="list-style-type: none"> <li>1. Clean the oil line</li> <li>2. Check electrical system</li> <li>3. Fill tank</li> <li>4. Repair or replace pump</li> <li>5. Check load</li> </ol>
Lift can not lower	<ol style="list-style-type: none"> <li>1. Safety device are in activated</li> <li>2. Release valve in damage</li> <li>3. Oil system is jammed</li> </ol>	<ol style="list-style-type: none"> <li>1. Release the safeties</li> <li>2. Repair or replace</li> <li>3. Replace Clean the oil system</li> </ol>

# Parts List

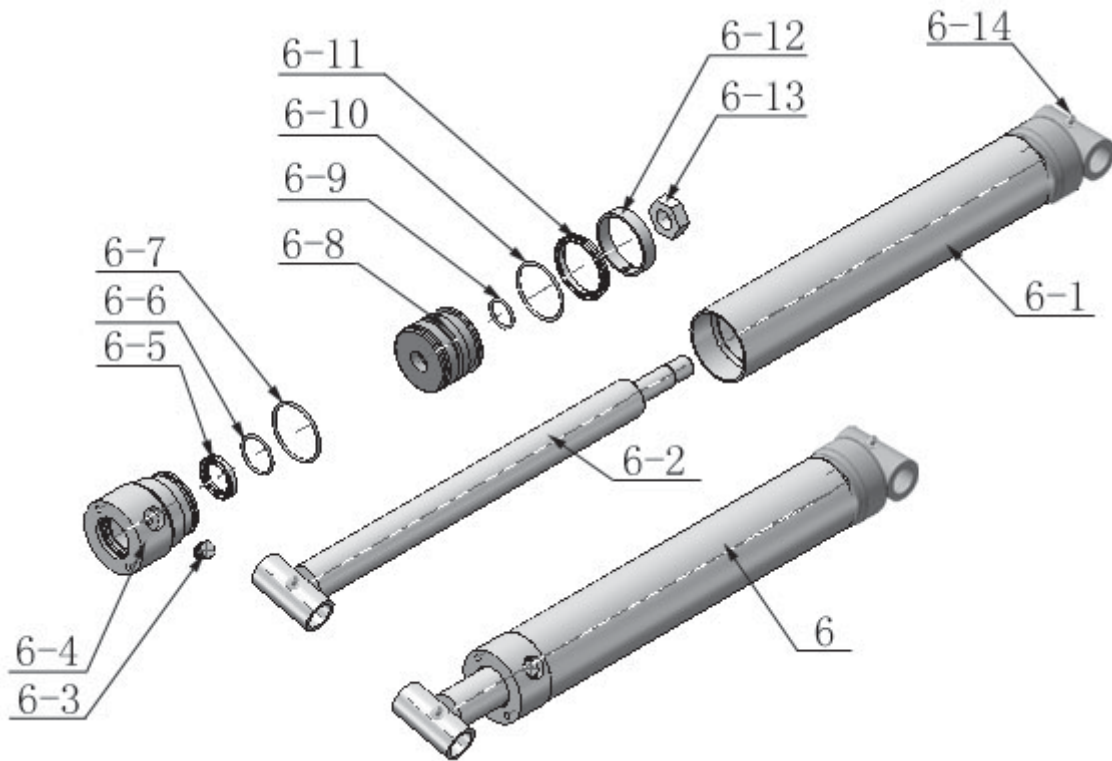
(See Fig. 9, Fig. 6-7)



<b>Item</b>	<b>Part#</b>	<b>Description</b>	<b>Qty</b>
1	11630001	Platform	1
2	10206019	Snap ring	20
3	11630003	Pin for drive-thru ramp	2
4	11630004	Drive-thru ramp	2
5	11630005	Connecting pin for cylinder	1
6	10630006	Cylinder	1
7	11630007	Cylinder base connecting pin	1
8	10206032	Snap ring	4
9	11630008	Frame support connecting pin (Upper)	4
10	11630009	Frame support (Front)	2
11	11630010	Frame support connecting pin (Lower)	4
12	11630011	Frame support (Rear)	2
13	10630100	Socket bolt	1
14	11630013	Safety block	1
15	11630014	Safety bar set	1
16	10420020	Hex bolt	2
17	10630015	Spring	2
18	10209022	Washer	2
19	10209056	Nylok nut	3
20	10640024	Roller assembly	2
21	10630102	Rubber block	2
22	10620034	Rubber pad	4
23	11630012	Base frame	1
24	81513008	Manual power unit	1
25	10209003	Hex bolt	4
26	10209005	Nylok Nut	4
27	10640021	Power unit stand	1
28	10206006	Washer	2
29	10420046	Split pin	2
30	10209064	Straight Fitting	1
31	10630101	Oil hose	1
32	10209060	90° Fitting for power unit	1
33	10630500	Parts Box	1

# Parts For Cylinder

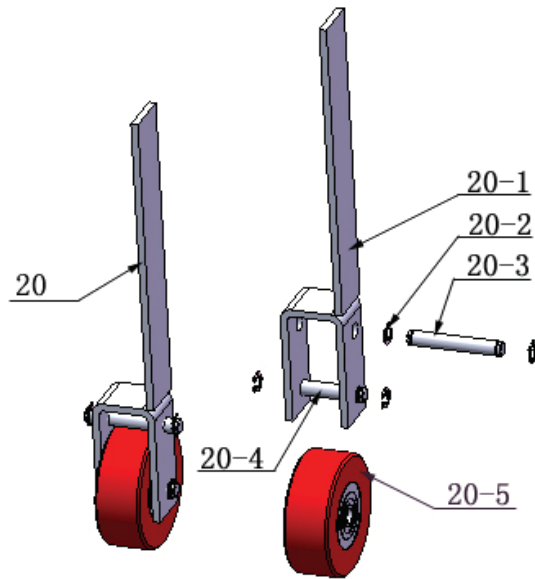
(See Fig. 10)



Item	Part No.	Description	Qty
6-1	11630029	Bore Weldment	1
6-2	11630026	Piston Rod	1
6-3	10201034	Bleeding Plug	1
6-4	11630030	Head cap	1
6-5	10209078	Dust ring	1
6-6	10620058	O - Ring	1
6-7	10620049	O - Ring	1
6-8	630028	Piston	1
6-9	10206069	O-Ring	1
6-10	10630027	O-Ring	1
6-11	10620054	Y-Ring	1
6-12	10620055	Support Ring	1
6-13	10206071	Nut	1
6-14	10620064	Greasing Fitting	2

# Parts For Roller Assembly

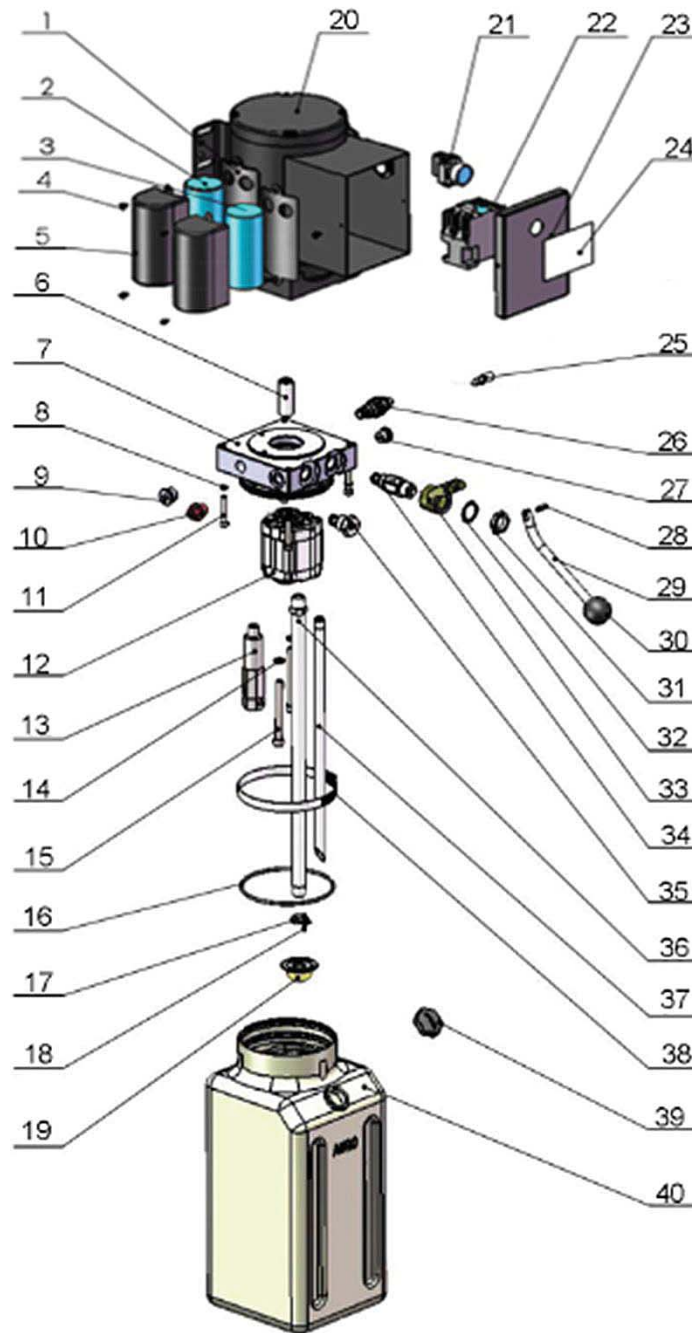
(See Fig. 11)



Item	Part#	Description	Qty
20-1	11630031	Rollers handle	2
20-2	10630032	Snap Ring	8
20-3	11630033	Connecting Shaft	2
20-4	11630034	Roller Shaft	2
20-5	10640023	Roller	4

# Parts For Atlas Manual Power Unit 110/60Hz/1 Phase

(See Fig. 12)



Item	Part No.	Description	Qty
1	81400180	Rubber Pad	2
2	81400130	Starting capacitor	1
3	81400088	Running capacitor	1
4	420148	Cup head bolts with washer	4
5	81400066	Cover for capacity	2

6	81400363	Motor Connecting Shaft	1
7	81400362	Manifold Block	1
8	10209149	Lock Washer	4
9	81400276	Plug	1
10	81400259	Plug	1
11	85090142	Socket Bolt	4
12	81400312	Gear pump	1
13	81400537	Buffering Valve	1
14	10209034	Lock Washer	2
15	81400295	Socket Bolt	2
16	81400365	O Ring	1
17	10209152	Belt	1
18	85090167	Magnet	1
19	81400290	Filter	1
20	81400412	Motor	1
21	10420070	Push Button	1
22	41030055	AC Contactor	1
23	81400287	Cover of Motor terminal box	1
24	71111182	Power unit label	1
25	81400560	Throttle valve	1
26	81400266	Overflow Valve	1
27	81400284	Plug	1
28	81400452	Elastic latch	1
29	81400451	Release valve handle	1
30	10209020	Black plastic ball	1
31	81400421	Relief valve nut	1
32	81400422	Relief valve washer	1
33	81400449	Release valve handle seat	1
34	81400443	Relief valve	1
35	81400267	Check valve	1
36	81400375	Oil suction pipe	1
37	81400376	Oil return pipe	1
38	81400364	Clamp	1
39	81400263	Oil tank cap	1
40	81400320	Oil tank	1

# Warranty

---



**This item** is warranted for two (2) years on structural components and one (1) year on air or electric hydraulic power units, pneumatic power units, cylinders and major components from date of invoice. Wear items are covered by a 90 day warranty.

This LIMITED warranty policy does **not include a labor** warranty.

**NOTE: ALL WARRANTY CLAIMS MUST BE PRE-APPROVED BY THE MANUFACTURER TO BE VALID.**

The Manufacturer shall repair or replace at their option for this period those parts returned to the factory freight prepaid, which prove after inspection to be defective. This warranty will not apply unless the product is installed, used and maintained in accordance with the Manufacturers installation, operation and maintenance instructions.

This warranty applies to the ORIGINAL purchaser only, and is non-transferable. The warranty covers the products to be free of defects in material and workmanship but, does not cover normal maintenance or adjustments, damage or malfunction caused by: improper handling, installation, abuse, misuse, negligence, carelessness of operation or normal wear and tear. In addition, this warranty does not cover equipment when repairs or alterations have been made or attempted to the Manufacturer's products.

THIS WARRANTY IS EXCLUSIVE AND IS LIEU OF ALL OTHER WARRANTIES EXPRESSED OR IMPLIED INCLUDING ANY IMPLIED WARRANTY OR MERCHANTABILITY OR ANY IMPLIED WARRANTY OF FITNESS FROM A PARTICULAR PURPOSE, AND ALL SUCH IMPLIED WARRANTIES ARE EXPRESSLY EXCLUDED.

THE REMEDIES DESCRIBED ARE EXCLUSIVE AND IN NO EVENT SHALL THE MANUFACTURER, NOR ANY SALES AGENT OR OTHER COMPANY AFFILIATED WITH IT OR THEM, BE LIABLE FOR SPECIAL CONSEQUENTIAL OR INCIDENTAL DAMAGES FOR THE BREACH OF OR DELAY IN PERFORMANCE OF THIS WARRANTY. THIS INCLUDES, BUT IS NOT LIMITED TO, LOSS OF PROFIT, RENTAL OR SUBSTITUTE EQUIPMENT OR OTHER COMMERCIAL LOSS.

**PRICES:** Prices and specifications are subject to change without notice. All orders will be invoiced at prices prevailing at time of shipment. Prices do not include any local, state or federal taxes.

**RETURNS:** Products may not be returned without prior written approval from the Manufacturer.

DUE TO THE COMPETITIVENESS OF THE SELLING PRICE OF THESE LIFTS, THIS WARRANTY POLICY WILL BE STRICTLY ADMINISTERED AND ADHERED TO.