

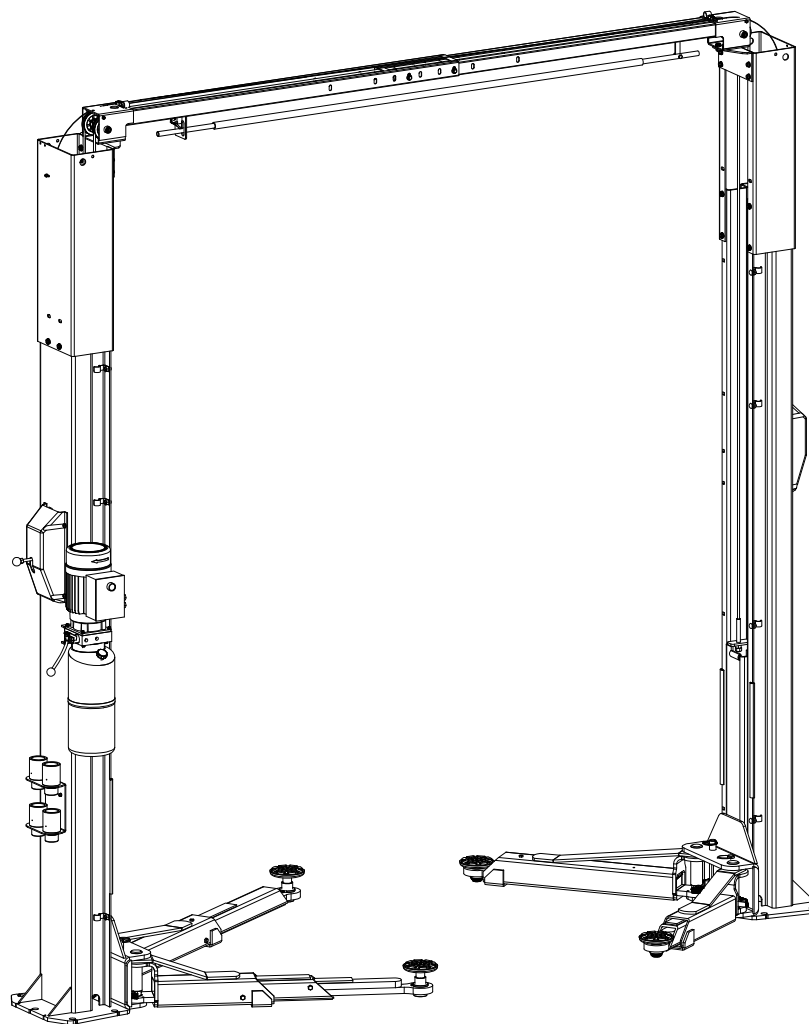
ED. 01/2015

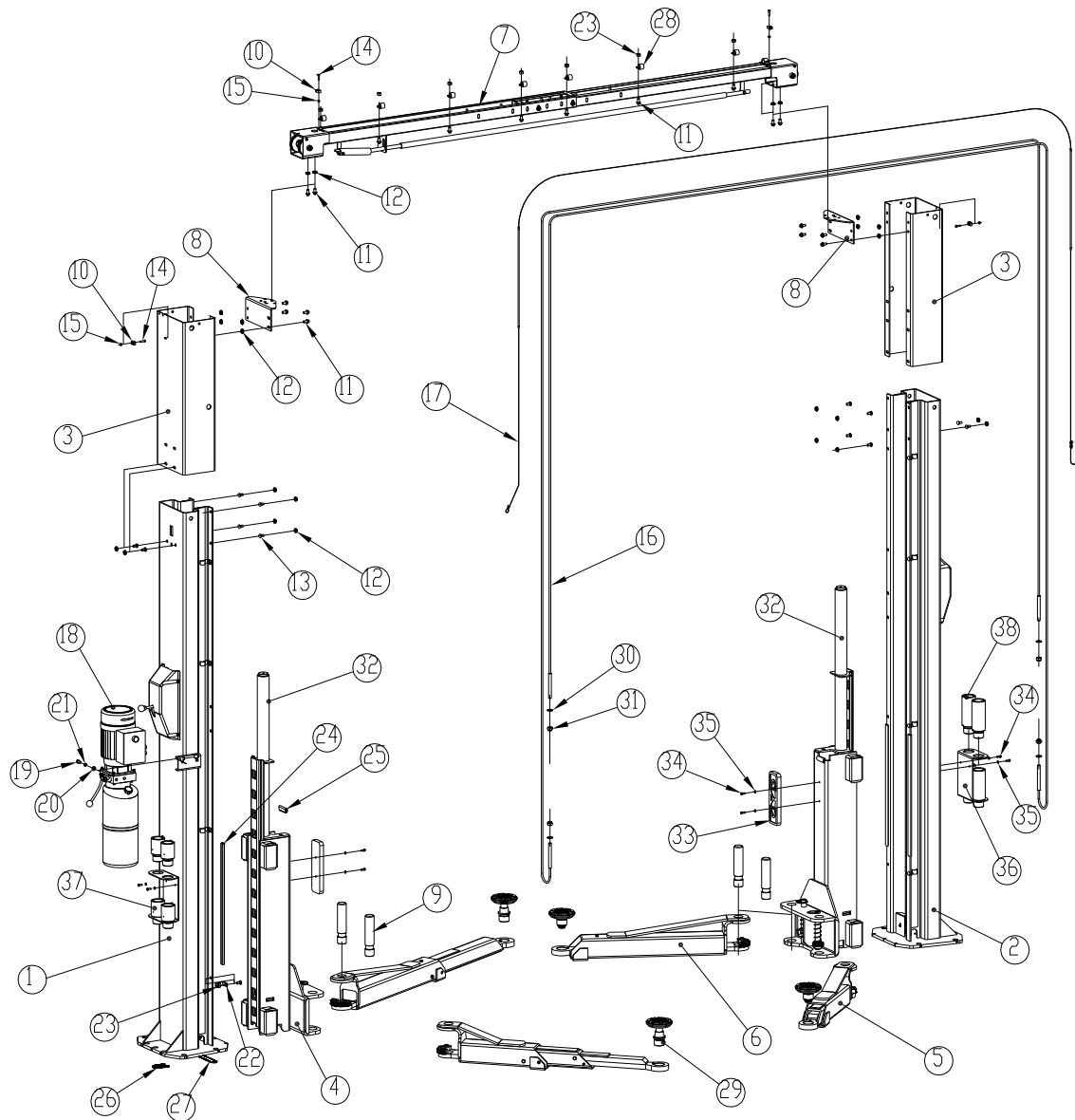


**PART CATALOGUE**

**APEX 10**

**TWO POST LIFT**



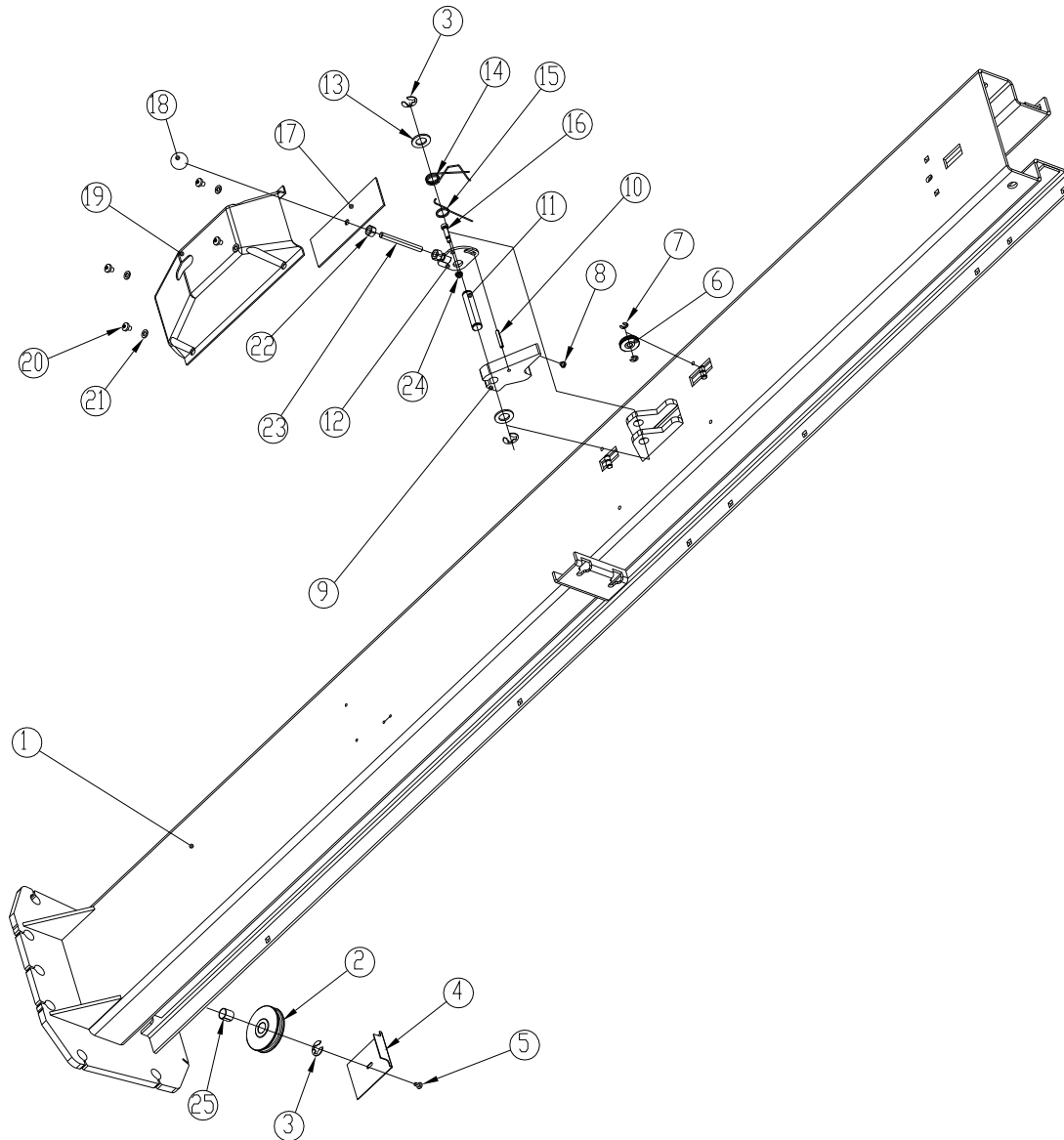


TAV.0	LIFT	ED. 01/15
-------	------	-----------

ITEM	PART NO.	DESCRIPTION	QTY	REMARK
1	Z23A110000AM	Power-side column assembly	1	
2	Z23A120000AM	Off-side column assembly	1	
3	Z23A130001	Column extension L=800	2	
4	Z23A200000	Carriage assembly	2	
5	Z23A320000AM	Short arm assembly	2	
6	Z23A310000AM	Long arm assembly	2	
7	Z23A400000AM	Overhead beam assembly	1	
8	Z23A500101	Overhead beam support	2	
9	Z23A500102	Arm shaft	4	
10	Z23A502201	Safety release wire guide	4	
11	0201136	Screw M10X20	18	
12	0204030	Flange nut M10	24	
13	0201137	Round head screw M10X20	22	
14	0201144	Screw M6X25	4	
15	0203004	Nut M6	4	
16a	Z23A501100	Equalizer cable D.8 L=9170	2	Apex 10
16b	Z23A501100-H1	Equalizer cable D.8 L=10390	2	Apex 10H
17a	Z23A502100	Safety release wire D.1.5 L=8000	1	Apex 10
17b	Z23A502100-H1	Safety release wire D.1.5 L=9200	1	Apex 10H
18		Hydraulic power unit 220V/60Hz/1PH 1.5KW	1	
19	0201046	Screw M10X20	2	
20	0205011	Washer D.10	2	
21	0208007	Locking washer D.10	2	
22	Z23A503200	Pipe U bolt	8	
23	0203032	Nut M10	16	
24	Z23A510101AM	Long rubber protection	4	
25	Z23A510102	Short rubber protection	2	
26	Z23A510201	Nylon shim 1	20	
27	Z23A510202	Nylon shim 2	20	

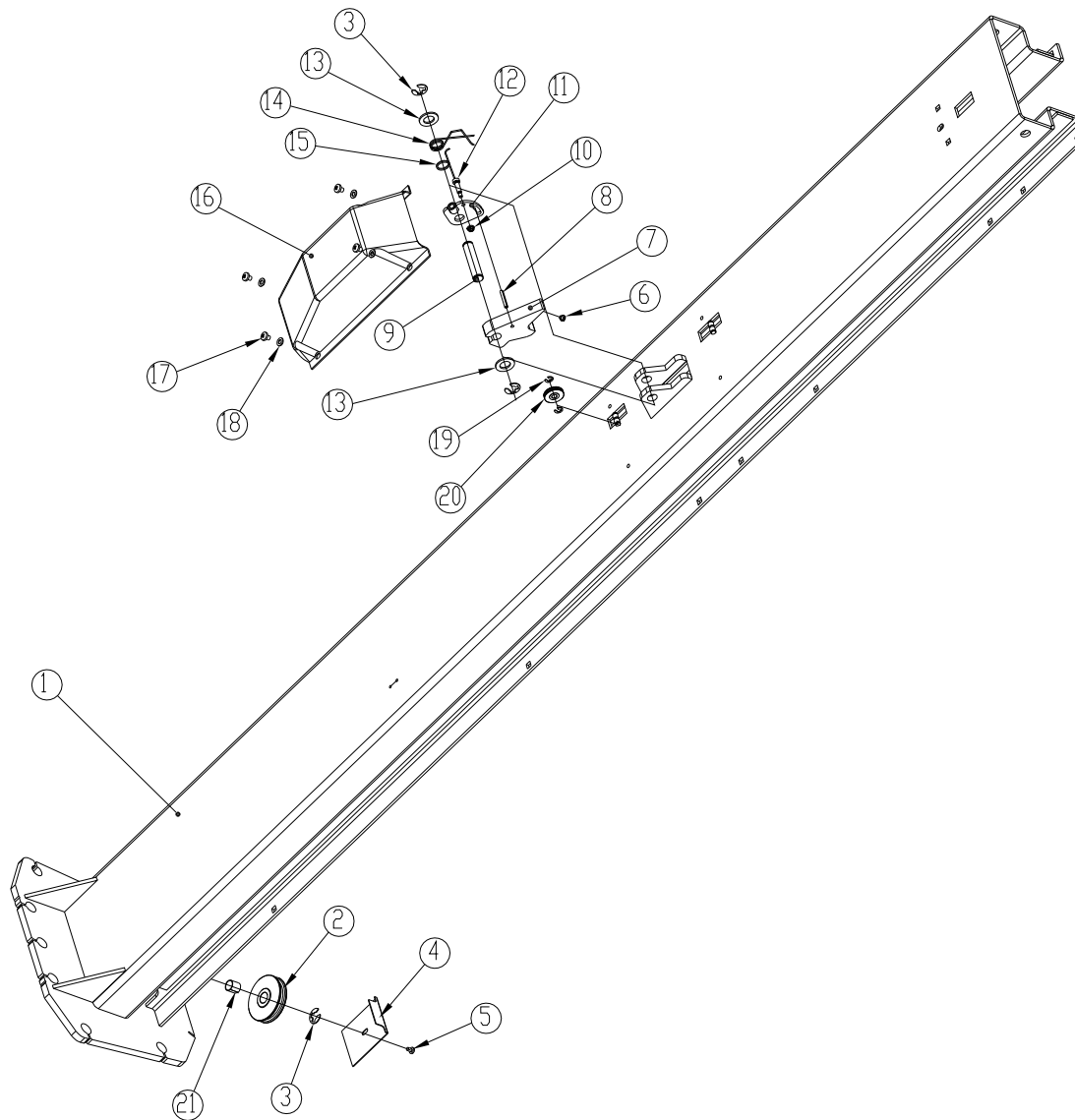
TAV.0	LIFT		ED. 01/15
-------	------	--	-----------

28	Z23A503100	Hose clamp	8
29	Z23A313000AM	Arm adaptor	4
30	0205017	Washer D.14	4
31	0204006	Self-locking nut M14	4
32	Z23AY20000	Hydraulic cylinder	2
33	XSZ-8-802-2	Square rubber protection	2
34	0202032	Screw M6X16	8
35	0205006	Washer D.6	8
36	Z23A601102	Pad extension holder	2
37	Z23A601200	Pad extension H.80	4
38	Z23A601300	Pad extension H.155	4



TAV.1.0	POWER-SIDE COLUMN	ED. 01/15
---------	-------------------	-----------

ITEM	PART NO.	DESCRIPTION	QTY	REMARK
1	Z23A110100AM	Column	1	
2	Z23A110001T	Cable pulley	1	
3	0211014	Seeger D.15	3	
4	Z23A110002	Anti-derailment safety plate	1	
5	0206031	Screw M6X10	1	
6	Z23A110005	Nylon wire pulley	1	
7	0211015	Seeger D.8	2	
8	Z23A110007	Shock absorber	1	
9	Z23A110006	Safety hook	1	
10	0213052	Elastic pin 6X40	1	
11	Z23A110004	Hook pin	1	
12	Z23A110200	Cam	1	
13	0205023	Washer D.24	2	
14	Z23A110009	Return spring 2	1	
15	Z23A110008	Return spring 1	1	
16	0201174	Shoulder bolt 8X25	1	
17	Z23A110010	ABS plate	1	
18	0215017	Lever knob M10X33	1	
19	Z23A504101	ABS cover	1	
20	0206034	Screw M8X10	4	
21	0205008	Washer D.8	4	
22	0203032	Nut M10	2	
23	Z23A110003	Safety release lever	1	
24	0204024	Flange Nut M6	1	
25	0210079	Bush SF-1/1920	1	



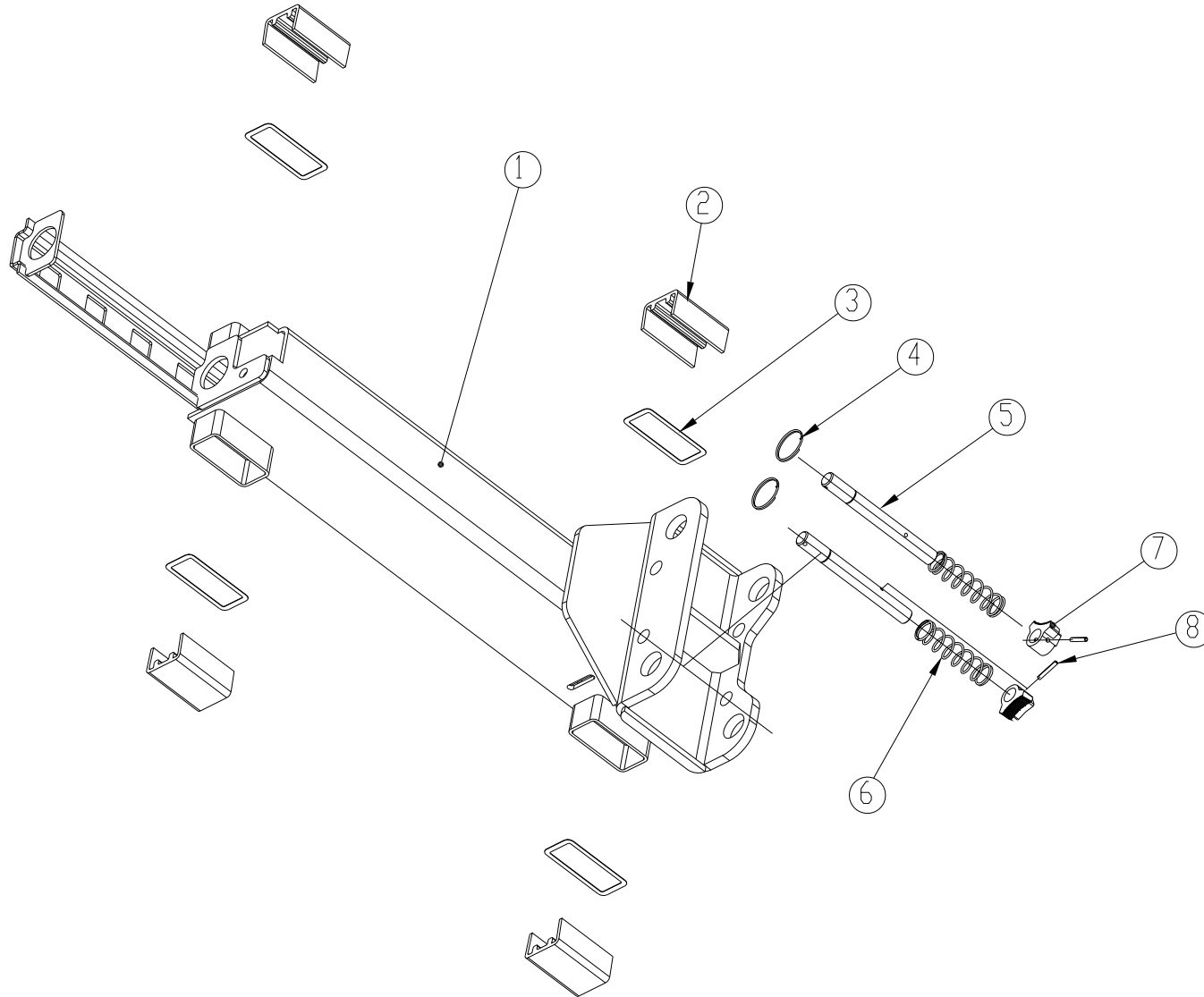
TAV.2.0

## OFF-SIDE COLUMN

ED. 01/15

ITEM	PART NO.	DESCRIPTION	QTY	REMARK
1	Z23A110100AM	Column	1	
2	Z23A110001T	Cable pulley	1	
3	0211014	Seeger D.15	3	
4	Z23A110002	Anti-derailment safety plate	1	
5	0206031	Screw M6X10	1	
6	Z23A110007	Shock absorber	1	
7	Z23A110006	Safety hook	1	
8	0213052	Elastic pin 6X40	1	
9	Z23A110004	Safety pin	1	
10	0204024	Flange Nut M6	1	
11	Z23A110200	Cam	1	
12	0201174	Shoulder bolt 8X25	1	
13	0205023	Washer D.24	1	
14	Z23A110009	Return spring 2	1	
15	Z23A110008	Return spring 1	1	
16	Z23A504101	ABS cover	1	
17	0206034	Screw M8X10	4	
18	0205008	Washer D.8	4	
19	0211015	Seeger D.8	2	
20	Z23A110005	Nylon wire pulley	1	
21	0210079	Bush SF-1/1920	1	



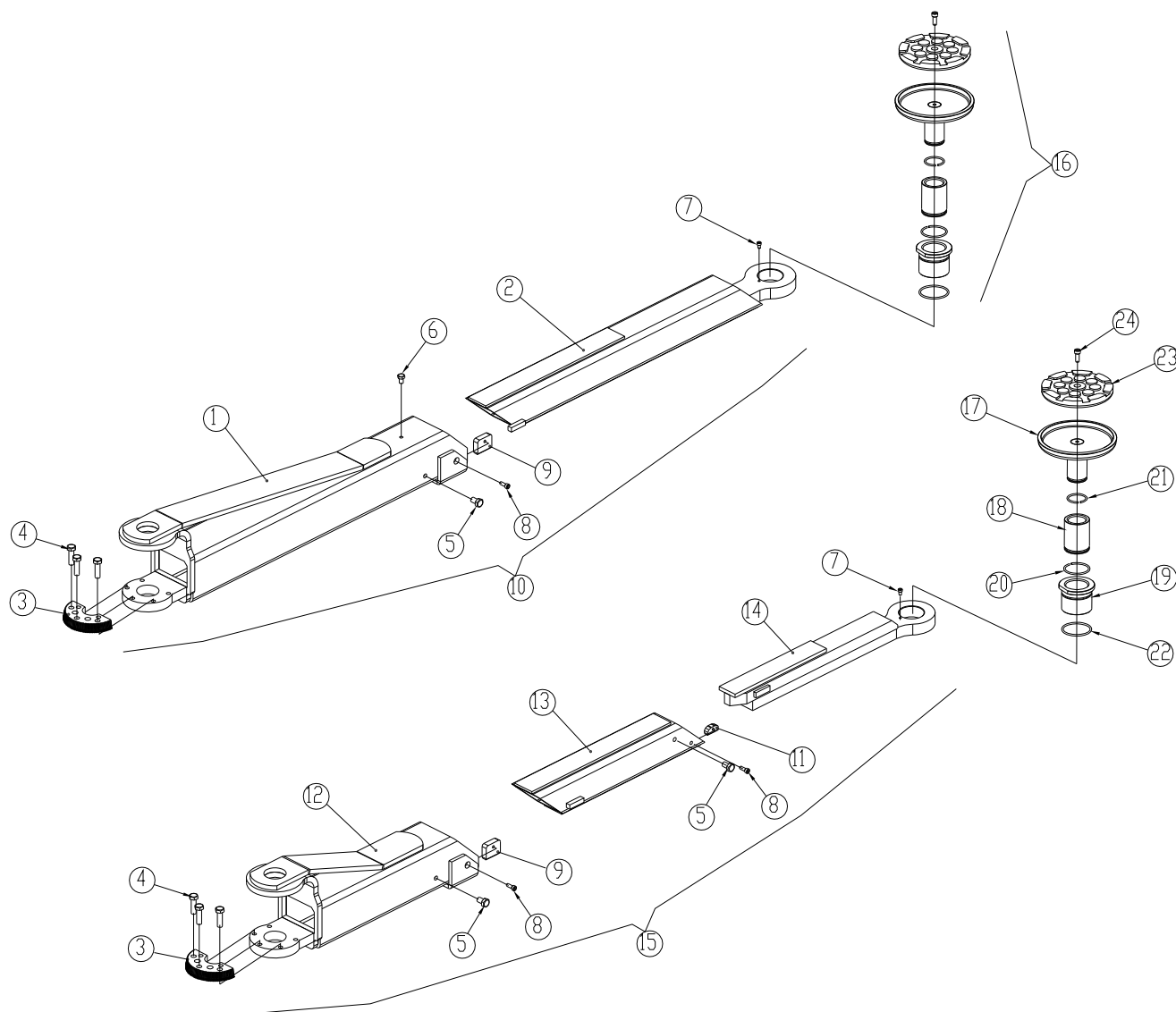


TAV.4.0

CARRIAGE

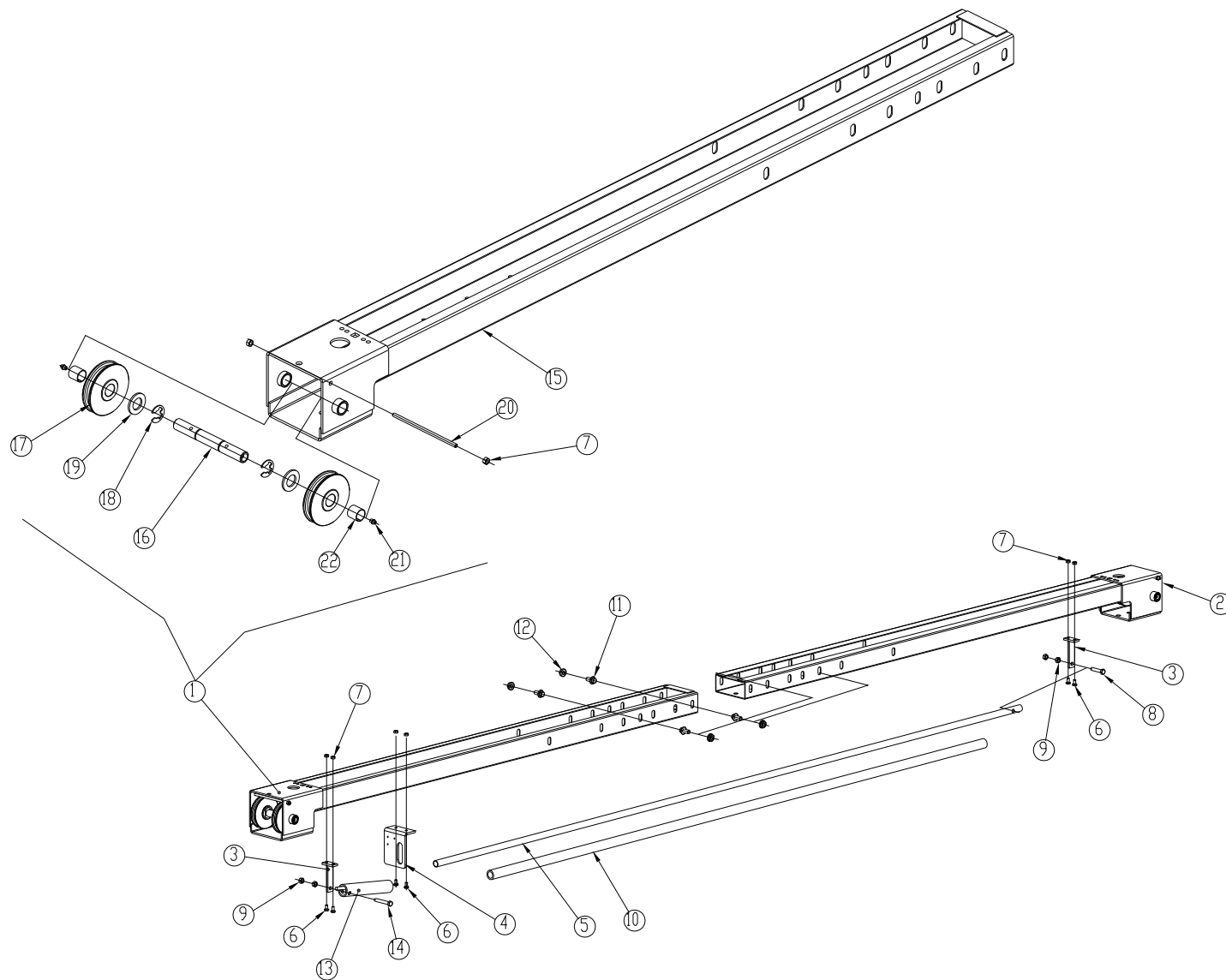
ED. 01/15

ITEM	PART NO.	DESCRIPTION	QTY	REMARK
1	Z23A210000	Carriage	1	
2	Z23A200001	Nylon slider	4	
3	Z23A200002	Slider shim	4	
4	Z23A200006	Safety release ring	2	
5	Z23A200004	Safety release pin	2	
6	Z23A200005	Spring	2	
7	Z23A200003	Toothed block	2	
8	0213052	Elastic pin 6X40	2	



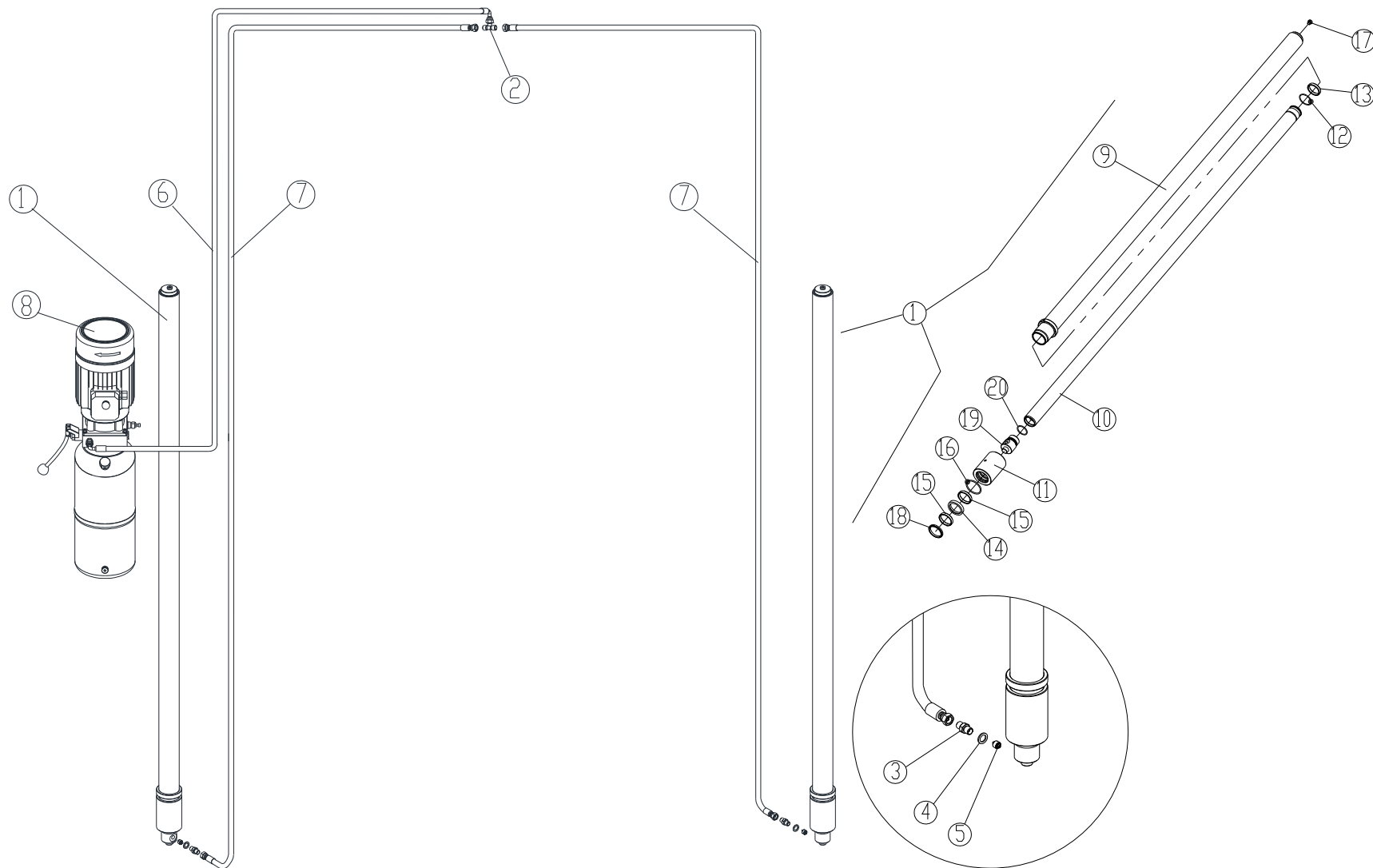
TAV.5.0	ARMS + ADAPTOR	ED. 01/15
---------	----------------	-----------

ITEM	PART NO.	DESCRIPTION	QTY	REMARK
1	Z23A311000AM	Long arm frame	1	
2	Z23A312000AM	Long arm extension	1	
3	Z23A310001	Anti-rotation gear	2	
4	0201050	Screw M10X35	6	
5	0201060	Screw M10X16	3	
6	0201022	Screw M8X12	1	
7	0202020	Screw M5X8	2	
8	0202032	Screw M6X16	3	
9	Z23A324001	Shim	2	
10	Z23A310000AM	Long arm assembly	1	
11	Z23A324001	Shim	1	
12	Z23A321000AM	Short arm frame	1	
13	Z23A322000	Short arm middle extension	1	
14	Z23A323000AM	Short arm outer extension	1	
15	Z23A320000AM	Short arm assembly	1	
16	Z23A313000AM	Arm adaptor	2	
17	Z23A313100AM	Pad support	2	
18	Z23A313001	Inner thread bush	2	
19	Z23A313002	Outer thread bush	2	
20	0212034	Seeger D.42	2	
21	0212035	Seeger D.32	2	
22	0309091	O-ring 45X2.65	2	
23	Z23A313202	Round rubber pad	2	
24	0202032	Screw M6X16	2	



TAV.7.0	OVERHEAD BEAM	ED. 01/15
---------	---------------	-----------

ITEM	PART NO.	DESCRIPTION	QTY	REMARK
1	Z23A410000AM	Left beam assembly	1	
2	Z23A420000	Right beam assembly	1	
3	SYJ30-17-02M1	Support 1	2	
4	2L-1-07	Support 2	1	
5	Z23A400001AM	Crush safety bar	1	
6	0206040	Screw M6X12	6	
7	0203004	Nut M6	8	
8	0201033	Screw M8X40	1	
9	0203008	Nut M8	4	
10	Z23A400002	Crush safety bar cover	1	
11	0201136	Screw M10X20	4	
12	0204030	Flange nut M10	4	
13	SP-1430-14	Mercury switch	1	
14	0201020	Screw M8X55	1	
15	Z23A411000AM	Left beam	1	
16	Z23A410001	Pulley shaft	2	
17	Z23A110001T	Cable pulley	4	
18	0211014	Seeger D.15	4	
19	0205023	Washer D.24	4	
20	Z23A410002	Anti-derailment safety pin	2	
21	0215041	Greaser M6X1 - GB/T1152	4	
22	0210079	Bush SF-1/1920	4	



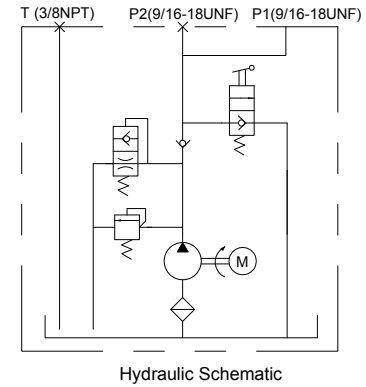
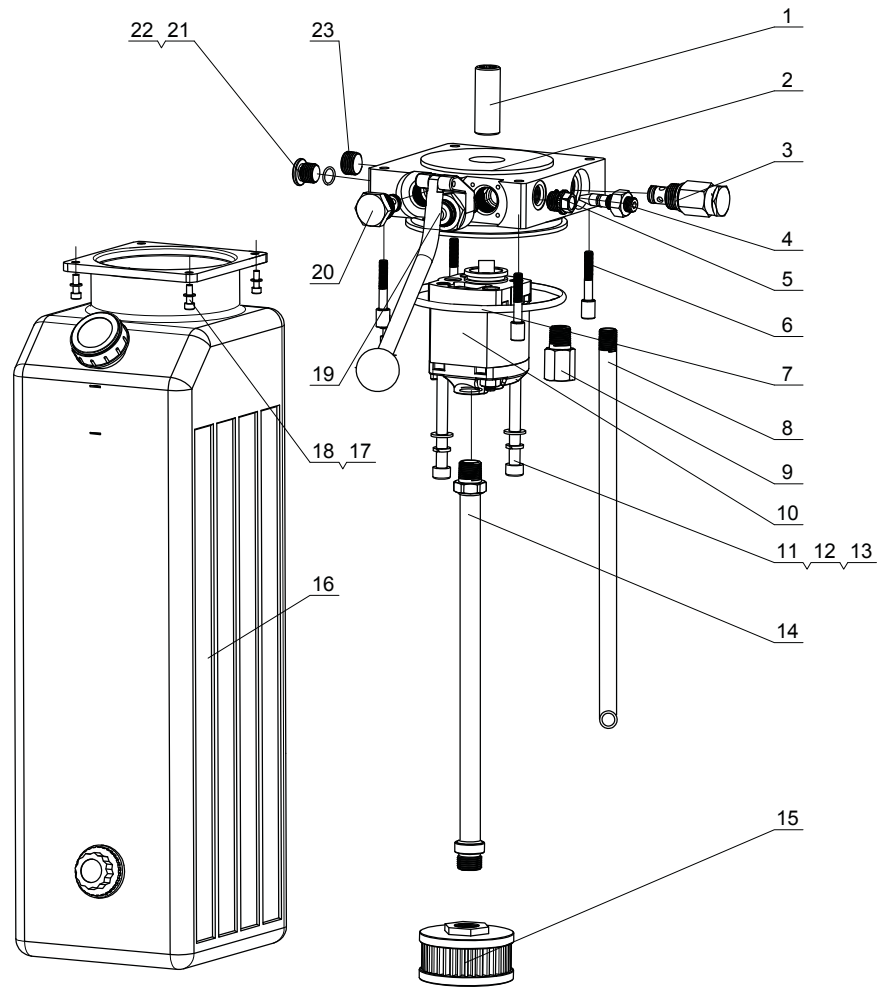
TAV.25.0

## HYDRAULIC CYLINDER

ED.01/15

ITEM	PART NO.	DESCRIPTION	QTY	REMARK
1	Z23AY20000	Hydraulic cylinder	2	
2	0303021	Tee union 1/4	1	
3	0303061	Union 1/4	2	
4	0313001	Washer 1/4	2	
5	0307021	Parachute valve 1/4	2	
6a	WW3800	Hydraulic hose 1/4 L=3800	1	Apex 10
6b	WW4410	Hydraulic hose 1/4 L=4410	1	Apex 10H
7a	ZZ5090	Hydraulic hose 1/4 L=5090	2	Apex10
7b	ZZ5700	Hydraulic hose 1/4 L=5700	2	Apex10H
8		Power unit	1	
9	Z23AY22000	Cylinder liner	2	
10	Z23AY21002	Cylinder shaft	2	
11	Z23AY18001	Cylinder cover	2	
12	0212036	Seeger D. 48	2	
13	0305042	Seal support ring 44X9.5X3	2	
14	0310033	Seal 48X60X11	2	
15	0315043	Seal 48X9.5X2.5	4	
16	0309087	O-ring 56X3.55	2	
17	0305017	Bleeder 1/8	2	
18	0311023	Scraper 48X56X5/6.5	2	
19	Z23AY11001	Shaft head	2	
20	0309088	O-ring 36.5X2.65	2	





23	Plug			1
22	O-ring			1
21	Plug			1
20	Check valve			1
19	Release valve		Manual operated	1
18	Washer			4
17	<b>Hex Socket Cap Screw</b>			4
16	Plastic Tank			1
15	Suction Filter			1
14	Suction Tube		404mm	1
13	Washer			2
12	Spring Washer			2
11	<b>Hex Socket Cap Screw</b>			2
10	Gear Pump			1
9	Buffer valve			1
8	Return Tube		396mm	1
7	O-ring			1
6	<b>Hex Socket Cap Screw</b>			4
5	Plug			1
4	Throttle			1
3	Relief valve		<b>2470PSI(+/-100PSI), Fixed</b>	1
2	Endhead			1
1	Coupling			1
No.	Description		Technical data	Qty

Designed by

Checked by

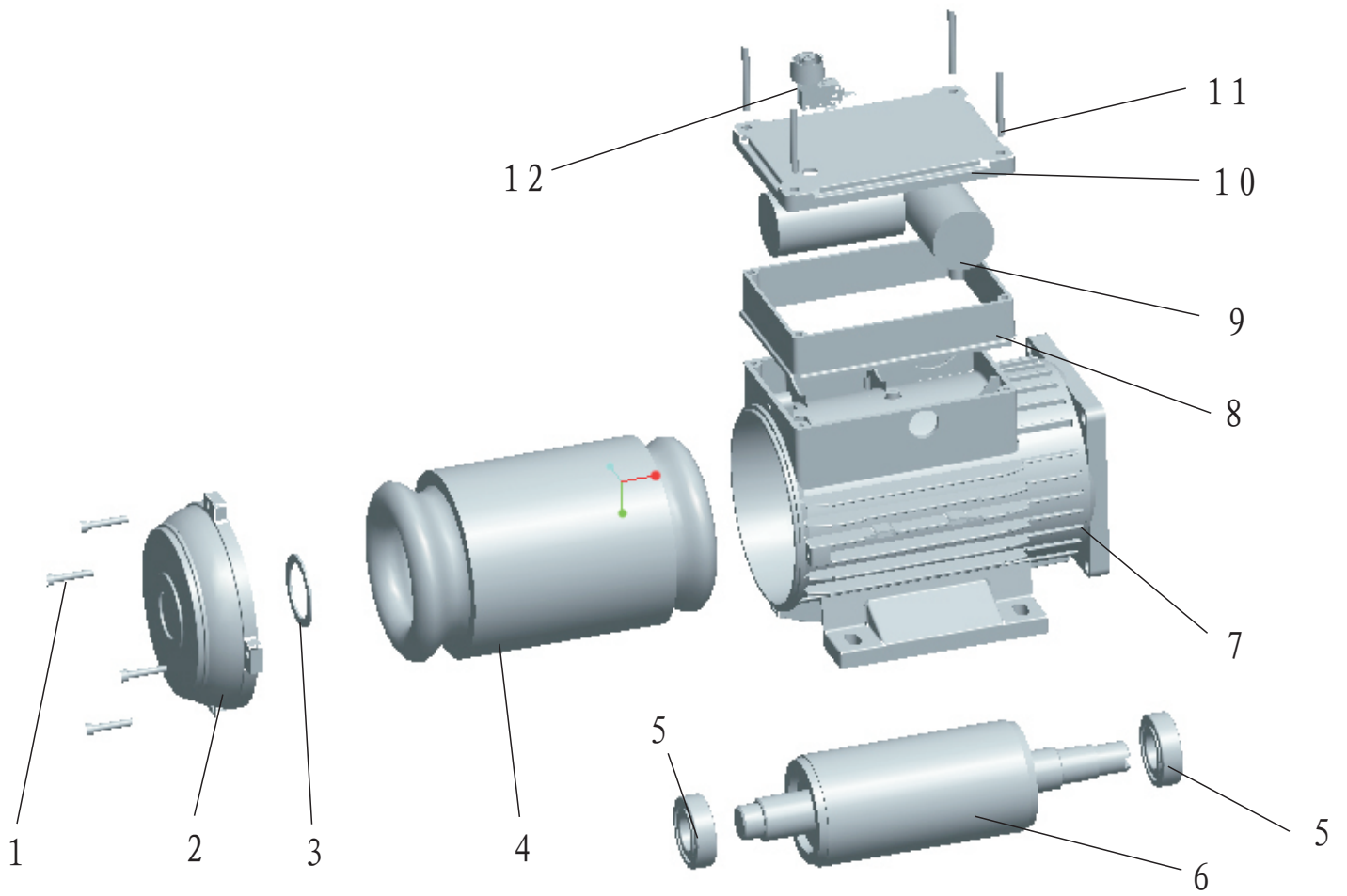
Reviewed by

Approved by

Name: Hydraulic Power Unit

PU20860 Motor

Rev.: 0



12	Switch block	1	
11	Screw	4	
10	Cover the lid	1	ZL102
9	Capacitance	2	
8	Shroud Box	1	ZL102
7	Main case	1	ZL102
6	Rotor	1	65Mn
5	ball bearing	2	
4	Stator	1	
3	Spring washer	1	65Mn
2	End plate	1	ZL102
1	Screw	4	
Pos.no.	English name	Amount	Material

PU20860 Motor

All rights reserved